



Travel Scoot[®] Extended Seat Post

Instructions

Caution!

Increasing the seat height increases the danger of tipping on uneven surfaces. Use the extended seat post only when absolutely necessary and adjust your riding habits accordingly.



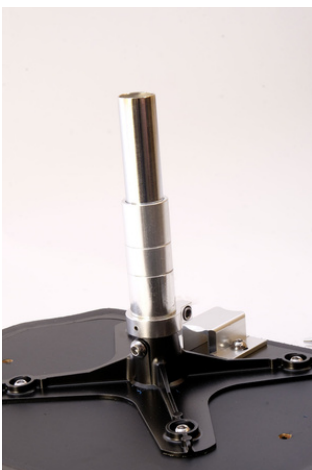
1.) Loosen (don't remove) the bolt on the fixed clamp.

2.) Loosen and remove the set screw.



3.) Remove the old (short) seat post and insert the new (longer) seat post, and align the hole with the threaded set screw hole.

4.) Reinstall and tighten the set screw.



5.) Slide all three spacers onto the seat post. The spacers may be secured from sliding off when the seat is removed by applying some tape or adhesive.